

# BRAZEAU COUNTY

BYLAW NO: 590-07

**BEING A BYLAW OF BRAZEAU COUNTY, IN THE PROVINCE OF ALBERTA, TO AMEND LAND USE BYLAW NO. 474-04.**

**WHEREAS**, Council of Brazeau County deems it expedient and proper, under the authority of and in accordance with the Municipal Government Act, RSA 2000, Chapter M-26 and amendments thereto, to make certain amendments to Land Use Bylaw No. 474-04; and

**WHEREAS**, the public participation requirements of Section 692 of the Municipal Government Act, RSA 2000, Chapter M-26, have been complied with;

**NOW THEREFORE**, the Council of Brazeau County, duly assembled, enacts as follows:


1. That Part of SE 4-49-7-W5M, be re-designated from (AV) Airport Vicinity District to (HC) Hamlet Commercial District, as shown on attached Schedule 'A'.
2. That this Bylaw shall take effect upon the final passing thereof.

**READ** a first time this 28<sup>th</sup> day of August, 2007

**READ** a second time this 18<sup>th</sup> day of September, 2007

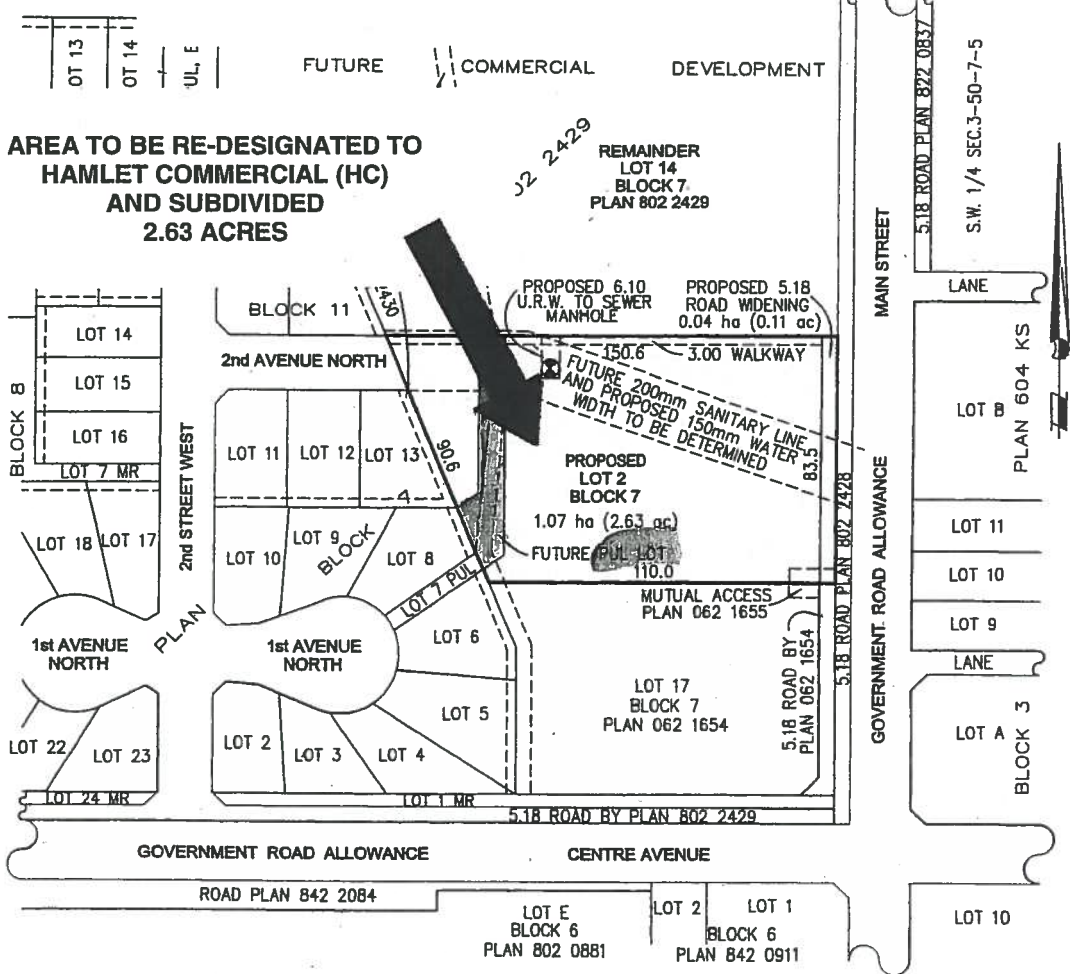
**READ** a third time and finally passed this 18<sup>th</sup> day of September, 2007

  
\_\_\_\_\_  
Reeve

  
\_\_\_\_\_  
County Manager

TENTATIVE PLAN

SCHEDULE "A"



PLAN SHOWING  
PROPOSED SUBDIVISION  
AFFECTING PART OF  
LOT 14, BLOCK 7, PLAN 802 2429  
WITHIN  
S.E.1/4 Sec.4-Twp.50-Rge.7-W5M.  
BRAZEAU COUNTY ALBERTA  
VINCENT A. ZIEGLER, A.L.S., 2007

SOURCE OF PIPELINE AND WELL SITE INFORMATION:  
ALBERTA ENERGY AND UTILITIES BOARD THROUGH  
ABACUS DATAGRAPHS.

PIPELINE LOCATIONS, OTHER THAN REGISTERED  
PIPELINE PLANS, HAVE BEEN PLOTTED FROM  
ALBERTA ENERGY AND UTILITIES BOARD BASE MAP  
INFORMATION. UNDER NO CIRCUMSTANCES SHOULD  
THE BASE MAP LOCATIONS BE USED FOR  
PHYSICALLY LOCATING PIPELINES, AS THEY ONLY  
PROVIDE A GENERAL REPRESENTATION OF THE  
PIPELINE ROUTE.

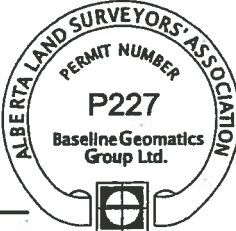
1. ALL DISTANCES ARE IN METRES AND  
DECIMALS THEREOF.

2. EXISTING APPROACH SHOWN THUS ..... ) (

3. PROPOSED APPROACH SHOWN THUS ..... ||

4. MUTUAL APPROACH SHOWN THUS ..... //

AREA AFFECTED BY THIS PLAN  
BOUNDED THUS .....  
AND CONTAINS 1.11 ha (2.74 ac.)



ORIGINAL	APR 02/07

**BASELINE GEOMATICS GROUP LTD.**  
PHONE: (780) 542-5252 FAX: (780) 542-5044  
E-MAIL: admin@baselinegroup.ca  
SCALE: 1:2000 FILE NO.: 2007-148