

BRAZEAU COUNTY

BYLAW 643-08

BEING A BYLAW OF BRAZEAU COUNTY, IN THE PROVINCE OF ALBERTA, TO AMEND LAND USE BYLAW NO. 474-04.

WHEREAS, Council of Brazeau County deems it expedient and proper, under the authority of and in accordance with the Municipal Government Act, RSA 2000, Chapter M-26 and amendments thereto, to make certain amendments to Land Use Bylaw No. 474-04; and

WHEREAS, the public participation requirements of Section 692 of the Municipal Government Act, RSA 2000, Chapter M-26, have been complied with;

NOW THEREFORE, the Council of Brazeau County, duly assembled, enacts as follows:

1. That a portion of NW 22-49-05-W5M be re-designated from Agriculture District (AG) to Country Residential District Suburban Estates (CRS), as shown on attached Schedule 'A'.
2. That this Bylaw shall take effect upon the final passing thereof.


READ a first time this 14th day of October, 2008

READ a second time this 4th day of November, 2008

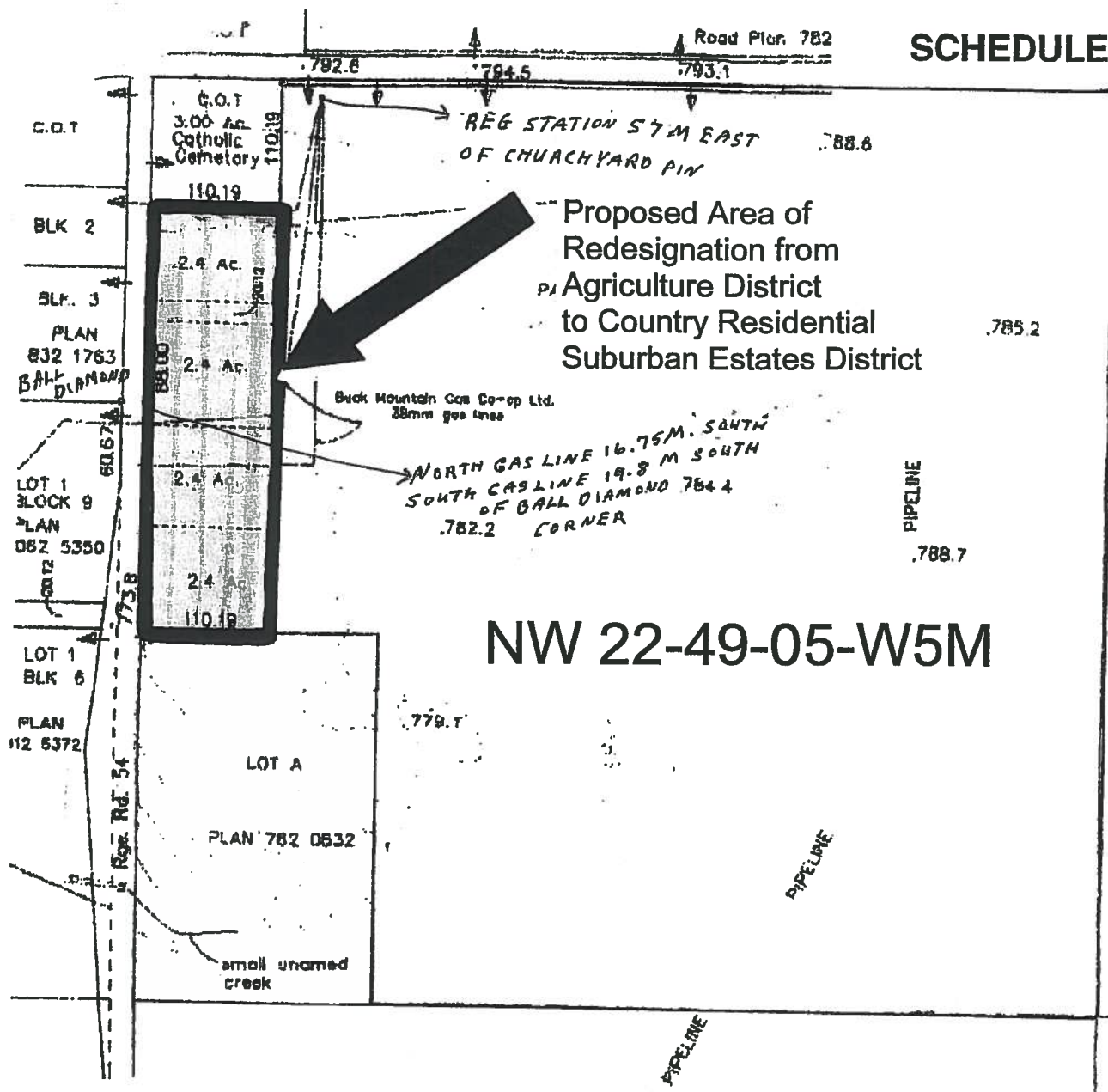
READ a third time and finally passed this 4th day of November, 2008



Reeve



County Manager



ALL DIMENSIONS ARE IN METRES AND DECIMALS THEREOF
EXISTING APPROACHES SHOWN THUS
PROPOSED LOT PATTERN SHOWN THUS
THERE ARE NUMEROUS GAS LINES ON N.W. 22

KINLOCH UNDERWOOD & ASSOCIATES LTD.
ALBERTA LAND SURVEYORS
EDMONTON ALBERTA

DRAFT 2 SKETCH FOR DISCUSSION (SHOWING PROPOSED SUBDIVISION OF PART OF
N.W. 1/4 Sec. 22-49-5-5
BRAZEAU COUNTY
LINDALE - ALBERTA

DATE: JULY 19, 2007	DWGREF: 8941LA20	JOB No.: 8941-0
SCALE: 1:5000 metric		DWG.No.: 8941-2