

# BRAZEAU COUNTY

BYLAW NO: 686-09

**BEING A BYLAW OF BRAZEAU COUNTY, IN THE PROVINCE OF ALBERTA, TO  
AMEND LAND USE BYLAW NO. 474-04, AS AMENDED**

**WHEREAS**, Council of Brazeau County deems it expedient and proper, under the authority of and in accordance with the Municipal Government Act, RSA 2000, Chapter M-26 and amendments thereto, to make certain amendments to Land Use Bylaw No. 474-04; As amended; and

**WHEREAS**, the public participation requirements of Section 692 of the Municipal Government Act, RSA 2000, Chapter M-26, have been complied with;

**NOW THEREFORE**, the Council of Brazeau County, duly assembled, enacts as follows:

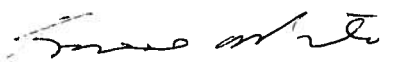
1. That Part of SW 12-49-07-W5M, be re-designated from Agriculture District (AG) to Rural Industrial District (RI), as shown on attached Schedule 'A' ("the Lands") and
2. That this Bylaw shall take effect upon the final passing thereof.

**READ** a first time this 7<sup>th</sup> day of April, 2009

**READ** a second time this 19<sup>th</sup> day of May, 2009

**READ** a third time and finally passed this 19<sup>th</sup> day of May, 2009

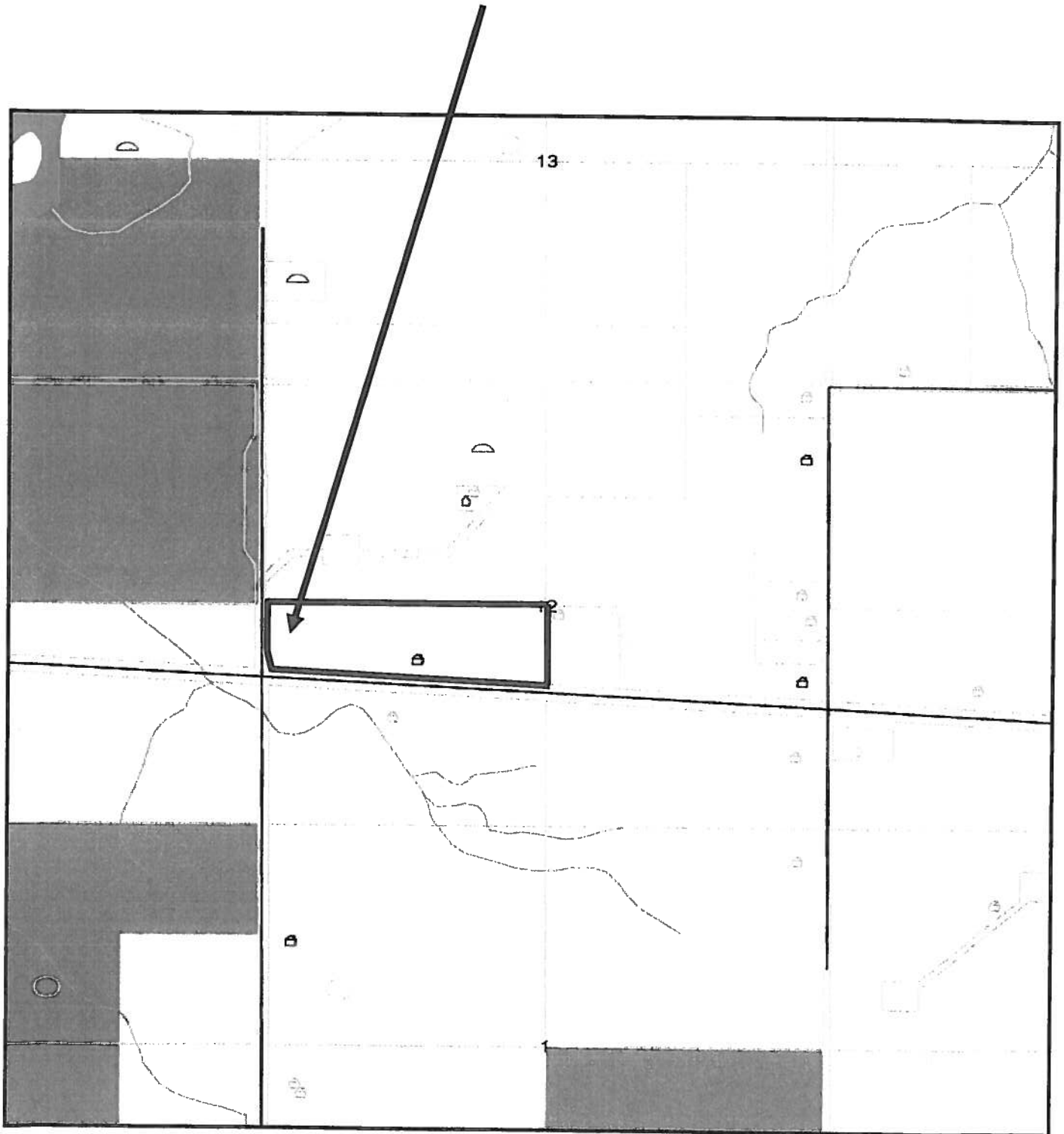
  
\_\_\_\_\_  
Reeve

  
\_\_\_\_\_  
County Manager

# SCHEDULE "A"

Part of SW 12-49-7-W5M

Area to be redesignated from  
Agriculture District (AG) to  
Rural Industrial District (RI)



*N*