

# Using & Navigating the Brazeau County Web GIS

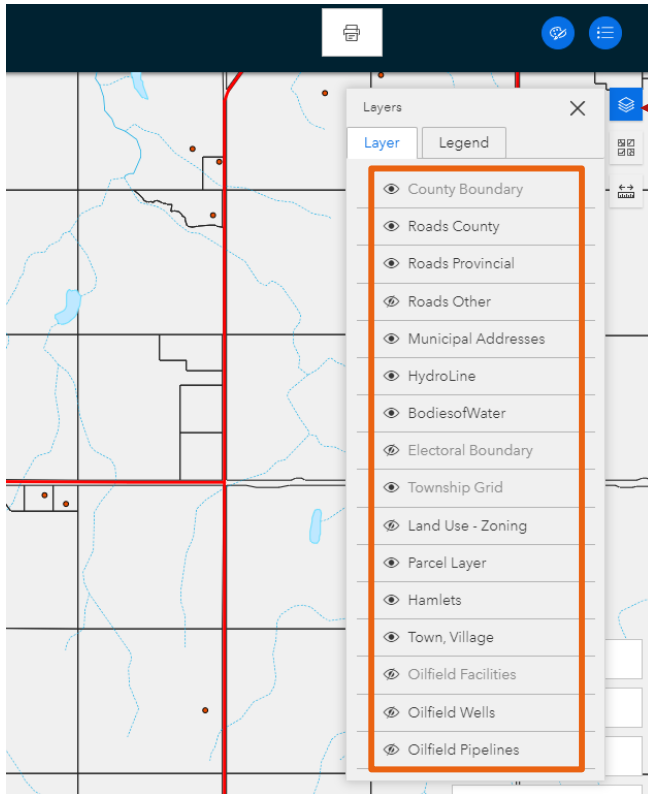
## SITE OVERVIEW

The screenshot shows the Brazeau County Web GIS interface. A search bar at the top center is labeled "Search by Roll, Municipal Address, or Legal Location". To its right are buttons for "Print" and "Drawing Tools Legend". On the left side, a vertical toolbar contains icons for "Zoom In & Out", "Home Extent", "My Location", and "North". On the right side, a panel is labeled "Layers Off/On" and includes "Basemap Gallery (Aerial Imagery)" and "Measuring Tool". At the bottom right, a list of hamlets is shown, with a callout "Zoom into a Hamlet" pointing to the list. The main map area displays a grid of land parcels with various roll numbers (e.g., 50-11-5, 49-11-5, etc.) and labels for hamlets like Cynthia, Lodgepole, Violet Grove, Poplar Ridge, Rocky Rapids, and Buck Creek.

## SEARCHING

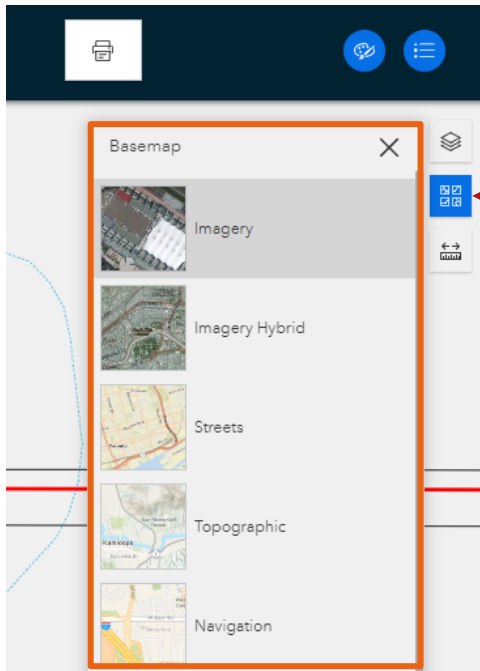
The screenshot shows the search dropdown menu. The search bar at the top contains the text "0025". Below the search bar, a list of search results is displayed, including "000250", "000251", "000253", "000254", "000255", "000257", and "Municipal Addresses". Under the "Municipal Addresses" section, two results are listed: "50025 RGE RD 63" and "50025 RGE RD 75". A callout box on the right explains: "Quick Search by Address/Roll/Legal Start typing and the list with auto-populate with search result options. Select from the list and the browser will zoom to the selection."

## LAYER TOOL



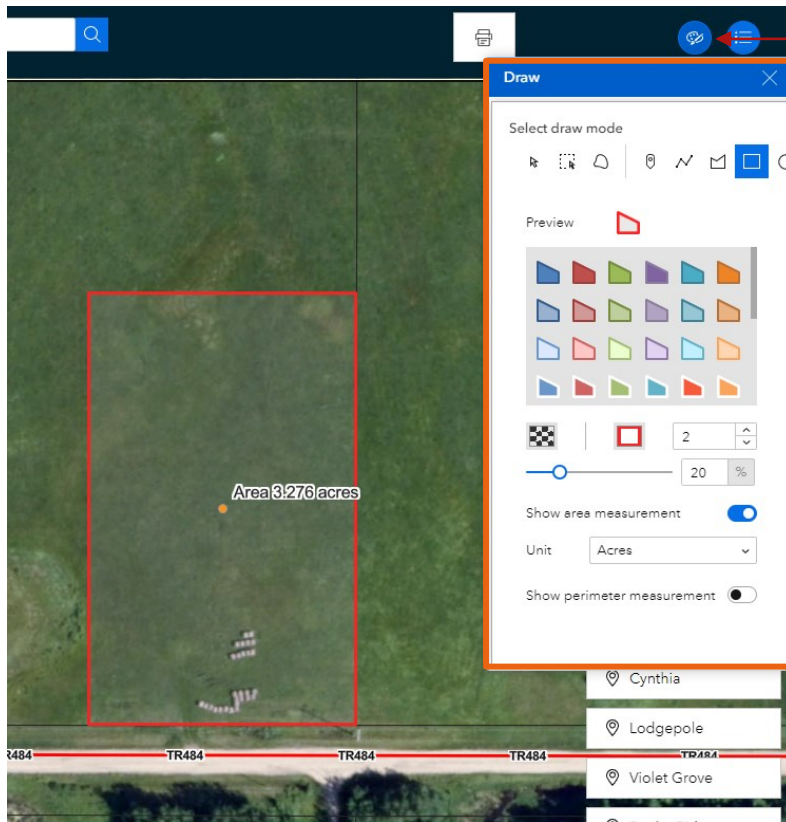
Other than the Parcel layer (which provides the overall information about the parcel), these thematic layers can be turned on for more details through the layer list tool.

## BASEMAP GALLERY



To select a different basemap/background when viewing the map; select the basemap gallery tool. The Imagery basemap uses Brazeau County Ortho Imagery from 2020 (25cm and 7.5cm)

## DRAWING/PRINTING



When drawing objects; first select the drawing tool.

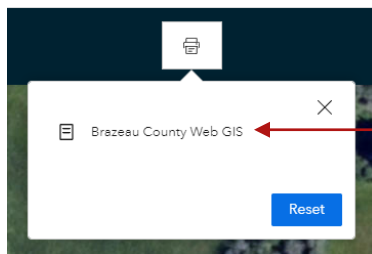
Then select the point, line, or shape option. From there, you can change the fill & outline of your shape as well as things like line width and opacity.

If you want measurements shown, check that box and choose your units.

Finally, draw your shape by clicking at the starting point, and double clicking at the end.

You can use the select tool to remove items.

When you are satisfied; you can print your layout by using the print icon.



When it is done generating your print; it will appear for download like this. Once you click it, you can open it & print it to an actual printer or attach it to an email.